

Help Legacy Editor 0.11 - Overview and History

		<p>Legacy Editor is an import / export dedicated to Fly! Legacy data program. Legacy Editor is the successor to VolEdit Fly! II. The latter developed in Pascal (Delphi) has been completely redeveloped in C + + (Qt).</p> <p>License This software is a shareware program developed in C + + using the Qt framework Digia. See details of this license on the menu 'About' software. It may not be distributed on other sites Simvol Avsim or without permission from the author or subject of financial compensation.</p> <p>Translation made with the help of Google translate: I apologize if any inaccuracies !</p>
07/21/2013	0.11	Fixed minor bugs : import data (OBJ/FNM)
06/2013	0.10	First release

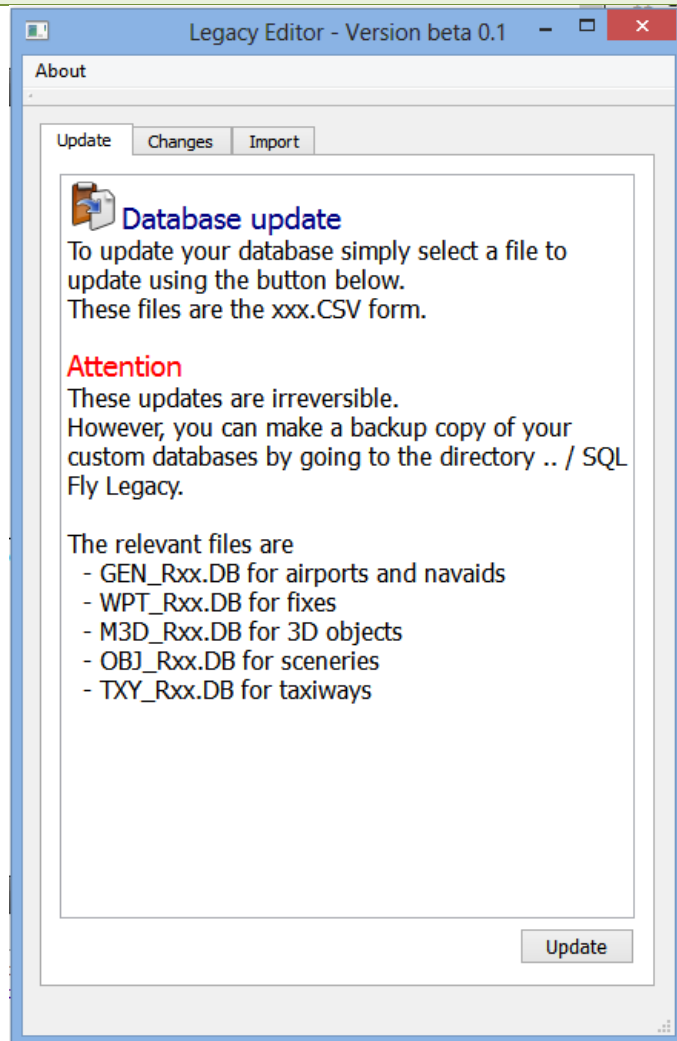
Help Legacy Editor beta 0.1 - Installation

In the installation directory Fly! Legacy create a subdirectory .. / Tools or be placed all the tools to Fly! Legacy.

In this directory create a subdirectory .. / Legacy Editor and place in the contents of the installation zip.

This program has been tested with Windows 7 and 8 only.

Aide Legacy Navigator version beta 0.1 - Updating the database



The Utility screen is divided into three tabs.

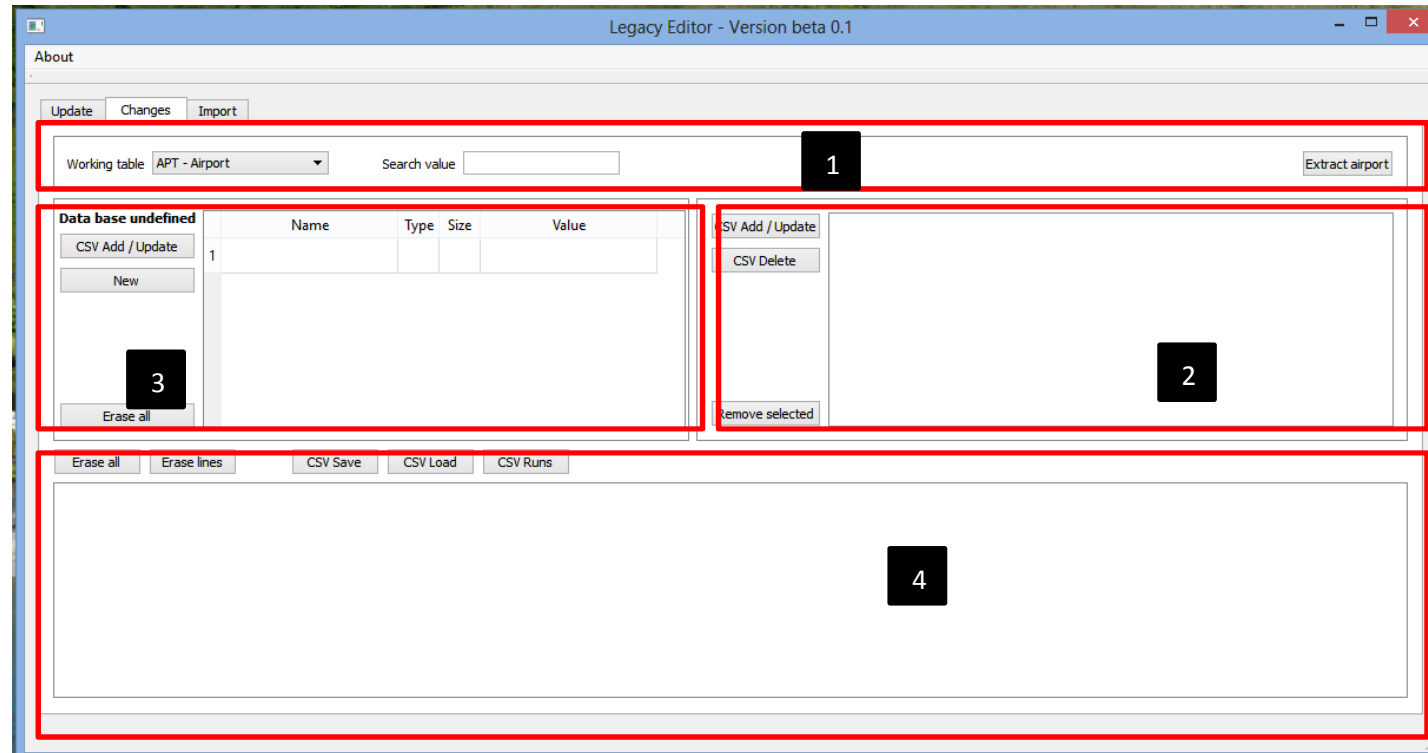
- Updating the database
- Data Changes
- Import data (in development)

The default startup is used to update data from files.

This is in terms of use of the former DexImport Fly II: allows an uninformed to simply update all user databases.

Aide Legacy Navigator version beta 0.1 - Updating the database

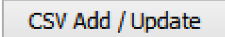
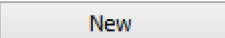
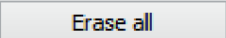

Tab of data changes is divided into four zones:



Aide Legacy Navigator version beta 0.1 - Updating the database

		Tab of data changes is divided into four areas:
	<p>Working table APT - Airport</p> <p>Search value <input type="text"/></p>	<ol style="list-style-type: none">1. Zone1: area selection<ol style="list-style-type: none">a. You must first select the type of data from a table (scenes, 3D objects and taxiways are not covered here)b. And seizure of the search: for example, an approximate value as 'LFP' which would give all airports starting with LFP if APT is selected or accurate 'LFPG' which will only Roissy Charles de Gaulle;c. Extract airport This button allows you to extract all the data from an airport (runway, ILS radios and frequencies but not buildings or taxiways) to zone 4 export.
		<ol style="list-style-type: none">2. Zone 2: The search results are displayed. Three buttons are available:<ol style="list-style-type: none">a. CSV Add / Update prepares export selected in the export list and posters in zone 4 lines.b. CSV Delete same as above but for deleting selected lines.

Aide Legacy Navigator version beta 0.1 - Updating the database

		<p>3. . Zone 3: edit box. Double click a row in Zone 2, the selected item is displayed here to find change. Three buttons are associated.</p> <p>a.  prepares export changed data and posters in zone 4.</p> <p>b.  empty the contents of the editing area and prepares a new registration area selected by table 1</p> <p> empty the content of the edit box.</p>
		<p>In the table creation / modification (zone 3) you will find information about the data type:</p> <ul style="list-style-type: none"> • Name: description of the field. Some are filled in automatically as 'Tile key' • Type: <ul style="list-style-type: none"> • I (integer): integer (no decimal) • D (double) decimal • C: alphanumeric character. The number set in the column size is the maximum length. • Size: Use only for fields of type C
	 <h3>Adding or Editing a Record</h3> <p>This button allows you to add to the list of export record being edited. This will allow other users to add this record to their own base or to change with the same data.</p>	<p>Additional help: an overview of each button will give you information of this type:</p>

Help Legacy Editor beta 0.1 - Data export

		In zone 4, export zone, you will find five buttons:
	Erase all	1. Erases the entire contents of this area
	Erase lines	2. Deletes only the selected lines in the area
	CSV Save	3. Saves the contents of this area in an export file
	CSV Load	4. Open an export file previously saved
	CSV Runs	5. Updates the database based on the contents of this area

Help Legacy Editor beta 0.1 - Data import

		<p>This tab will be documented later as being tested. It is partially functional. The goal is to format data from a copy-paste from aviation official documents without having to manually copy it.</p>
--	--	---